

Inspired TEC IT12000

AIR & SURFACE PURIFICATION



Owner's Manual



InspiredTEC, LLC

2 Year Manufacturer's Warranty

More Information Inside

Congratulations

on your purchase of the Inspired Tec IT12000 air purification enhancement system. This unit is designed to be installed into an existing HVAC system, and used as a virtually maintenance free enhancement to current air purification technology.

Please read and follow all service procedures outlined in this manual.

Please record the name and phone number of your Dealer

Name _____

Phone # _____

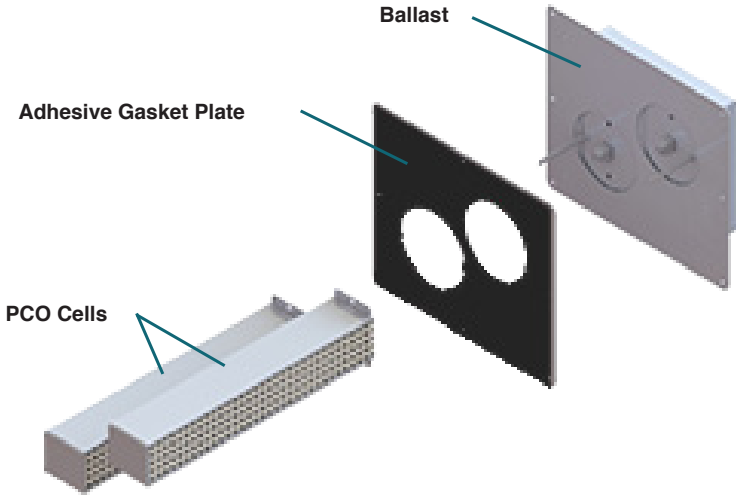
Please record the serial number of your Inspired Tec IT12000

Serial # _____

Contents

Product Contents	3
Installation Hardware	3
Replacement Parts	3
About Inspired Tec IT12000	4
Specifications	4
Recommended Installation Tools	5
Installation Requirements	5
Installation	6 - 8
Maintenance/UV Lamp Indicator	9
Changing the PCO Cell	10

Product Contents



Installation Hardware

- (8) Self-tapping Screws
- (4) Brass Thumb Nuts
- (4) Cell Mounting Screws

Replacement Parts

The PCO Cell is the only replacement part available for the Inspired Tec IT12000. Please contact your distributor for your new cell replacements.

PCO Cell Part Number: CELL-HV-14-O3-GT

About Inspired TEC IT12000

Inspired Tec IT12000 is a new generation HVAC Air purification system. Designed to work with existing purification technology to reduce odors, smoke, and a broad spectrum of indoor air contaminants.

Inspired Tec IT12000 is easily mounted into air conditioning and heating system air ducts where many problem can start. When the HVAC system is in operation, Inspired Tec IT12000 creates an Advanced Oxidation Process consisting of hydroperoxides, superoxide-ions, and a safe low level ozone-all friendly oxidizers that revert back to oxygen and hydrogen after the oxidation of a pollutant.

Used in conjunction with other current purification systems, Inspired Tec IT12000 can boost effectiveness and help distribute their benefits throughout your home.

Specifications

WARRANTY:

- 2 Year Manufacturer's Warranty

SIZE: (HxWxD)

- 9 13/16" x 11 5/16" x 17"

FEATURES:

- Replaceable PCO Cell

WEIGHT:

- 4.5 lbs.

ELECTRICAL:

- 120VAC - 277VAC 50/60Hz AC Line Operation
- 33W power consumption

COVERAGE:

- Up to 12,000ft

MECHANICAL:

- Distribution via air handler

Warnings



WARNING! - UV light in operation. Disconnect unit from power supply before servicing. Failure to follow warnings may result in severe eye damage.

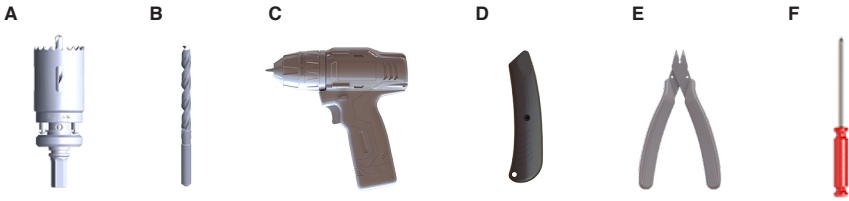


WARNING! - Unit should be mounted at least 24 inches from the heat exchanger or heating element. Placing the photocatalytic cell too close to the heating element can cause the photocatalytic matrix to combust.



To reduce the risk of electric shock, this equipment may have a grounding type plug that has a third (grounding) pin. This plug will only fit into a grounding type power outlet. If the plug does not fit into the outlet, contact qualified personnel to install the proper outlet. Do not alter the plug in any way.

Recommended Installation Tools



A - 3.5" Hole Saw Bit

B - 3/8" Drill Bit

C - Drill/Power Driver

D - Utility Knife

E - Tin Snips

F - Phillips Head Screwdriver

Installation Requirement

1. Unit should be installed downstream of the air handler in the HVAC system.
2. The ductwork around the installation area should be cleaned and dry to insure proper adhesion of the gasket materials and any tape used.
3. Two circular openings, measuring approximately 3.5" (8.89cm) each, will need to be cut into the existing duct work to install the unit properly.



Electrical Requirement

To use the 120V plug, be sure to locate the unit within 6 ft. of a standard 120V grounded outlet. Long term use on an extension cord is not recommended due to safety considerations.

Hardwiring Requirement

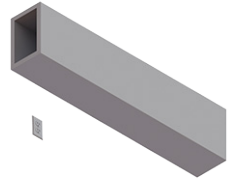
Permanent wiring of the unit into your HVAC system, or installations using a 220V plug (not included) should be done by a licensed HVAC Installer or Electrical Contractor only.

For 110V or 220V Applications: Black = L1, White = Neutral, Green - Ground

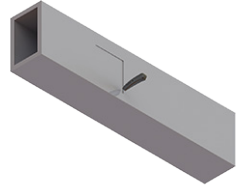
For International Applications: Brown = L1, Blue = L2, Green/Yellow = Ground

Installation

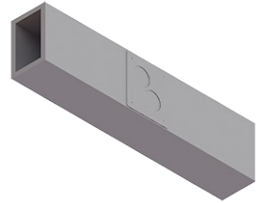
1. Find a suitable location to mount your Induct Unit.



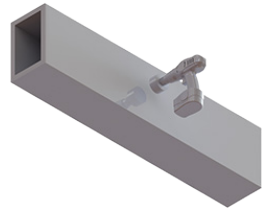
2. If necessary, cut away insulation for your plate to adhere to the duct.



3. Using the Adhesive Gasket Plate, trace the hole locations onto the duct.

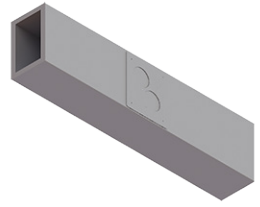


4. Use the Hole Saw and Drill to cut out the marked holes.



Alternative Cutting Method

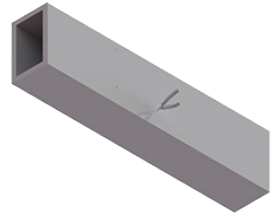
1. Using the Adhesive Gasket Plate, trace the hole locations onto the duct.



2. Drill holes around the outside edges of the previously marked holes but inside the outer holes of the Adhesive Gasket Plate.

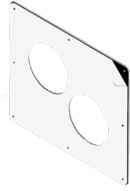


3. Use the Tin Snips to cut out the space around the marked holes.

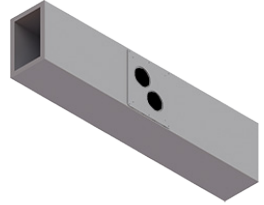


Installation

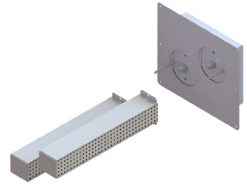
5. Remove the plastic backing on your Adhesive Gasket Plate.



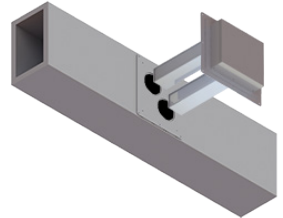
6. Press the Adhesive Gasket Plate onto the duct. Secure with the (8) Self-Tapping Screws.



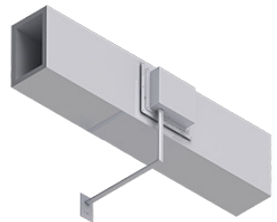
7. Connect the Cells to the Ballast using the (4) Cell Mounting Screws provided.



8. Place the unit and cells through the openings and align the four studs with the four holes in the ballast. Secure the unit with the (4) Brass Thumb Nuts until it is flush with the duct.



9. Plug the Unit Power Cable into the receptacle or have a Licensed Electrician or HVAC Installer to hardwire the unit directly into the HVAC system.



Maintenance / UV Lamp Indicator

Your Inspired Tec IT12000 unit requires no periodic maintenance beyond normal replacement of the PCO cell every 3 years.

Note: For optimal performance, we recommend the replacement of the PCO cell every 3 years, even if the UV lamp appears to be operating normally.

The UV lamp operation indicator on the face of the unit will glow when the UV lamp is in use. If the indicator does not glow and the unit has power, the PCO cell should be replaced.

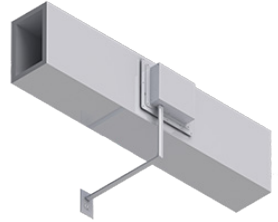
Disposal of the PCO Cell

Please do not throw a used PCO Cell in the garbage.

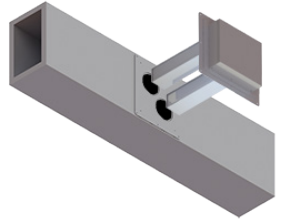
The special germicidal UVX bulb used in the Inspired Tec IT12000 contains a very small amount of mercury. Contact your local Waste Management Center for a proper disposal procedure.

Changing The PCO Cell

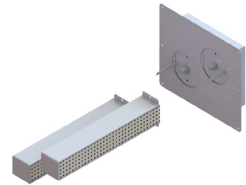
1. Remove the Unit Power Cable from the receptacle or ensure the unit isn't powered.



2. Remove the (4) Brass Thumb Nuts from the Unit Cover and Remove the Unit Cover and PCO Cells.

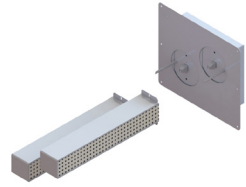


3. Remove the (4) Screws holding the PCO Cells in place and remove the PCO Cells from the Unit Cover.

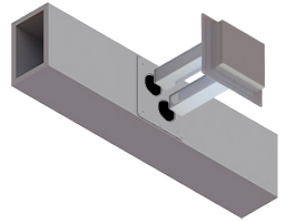


Changing The PCO Cell

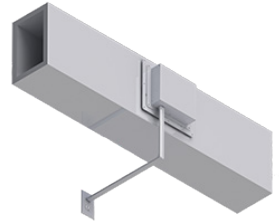
4. Exchange the Old PCO Cells with the new PCO Cells and replace the (4) Screws that hold them in place.



5. Replace the Unit Cover and PCO Cells in the duct and secure with the (4) Brass Thumb Nuts.



6. Place the Unit Power Cable back into the receptacle or repower your unit.



Warranty Information

Your Inspired TEC IT12000 HVAC Air Purifier is warranted to be free from all defects in material and workmanship in normal use for a period of (2) year from date of purchase.

The warranty is granted only to the original purchaser. The warranty is subject to the following provisions.

This warranty does not cover parts of the Air Purifier that require replacement under normal use. Although the PCO cell requires periodic replacement, the cell is warranted for the same 2 year period as the purifier. Any damages or malfunctions caused by negligence, abuse, or use not in accordance with the Owner's Manual are not covered by this warranty. Likewise, any defects or damages caused by unauthorized service or the use of other than Genuine Inspired TEC parts are not covered.

Inspired TEC will, at its option, repair or replace a defective Air Purifier or part(s) for the Air Purifier that is covered by this warranty. As a matter of warranty policy, Inspired TEC will not refund the customer's purchase price.

To obtain warranty service you must return the defective Air Purifier or Air Purifier parts along with proof of purchase to the Inspired TEC Authorized Warranty Station. All transportation charges on parts, or units, submitted under this Warranty shall be borne by purchaser. Unless this Warranty is expressly renewed or extended by Inspired TEC, any repaired or replaced part of unit shall be warranted to the original purchaser only for the length of the unexpired portion of the original warranty. For the location of the nearest Inspired TEC Authorized Warranty Station or for service information in the United States or Canada, please visit us online at:

www.inspiredtecllc.com

Further Limitations And Exclusions Are As Follows

Any warranty that may be implied in connection with your purchase or use of the Air Purifier, including any warranty of merchantability or any warranty for Fitness For A Particular Purpose is limited to the duration of this warranty. Some states do not allow limitations on how long an implied warranty lasts, so the above limitations may not apply to you.

Your relief for the breach of this warranty is limited to the relief expressly provided above. In no event shall Inspired TEC be liable for any consequential or incidental damages you may incur in connection with your purchase or use of the Air Purifier. Some states do not allow the exclusion or limitation of incidental or consequential damages, so the above limitation or exclusion may not apply to you.

This Warranty gives you specific legal rights, and you may also have other rights which vary from state to state.

Registration

Please register your new Inspired TEC Air Purification product within 10 days of purchase by filling out and returning the enclosed warranty registration card. Registering your new Inspired TEC product entitles you to the most up-to-date Inspired TEC product warranty and promotion information.